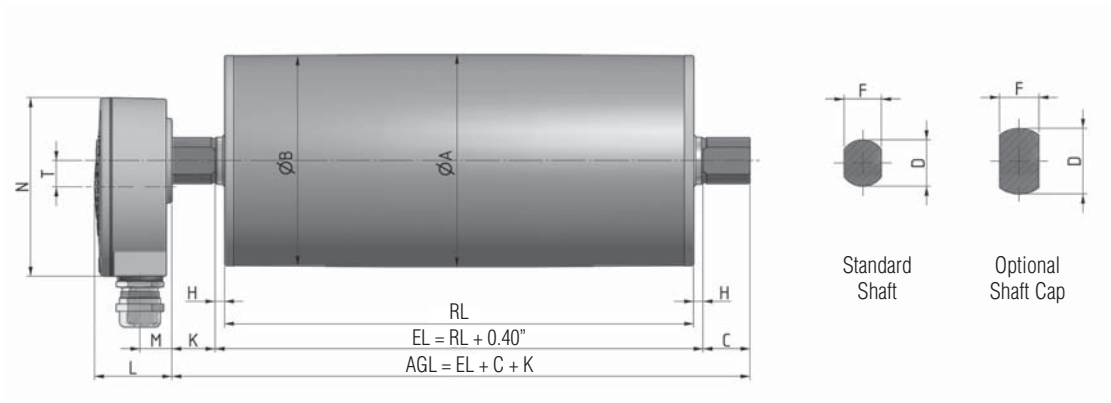


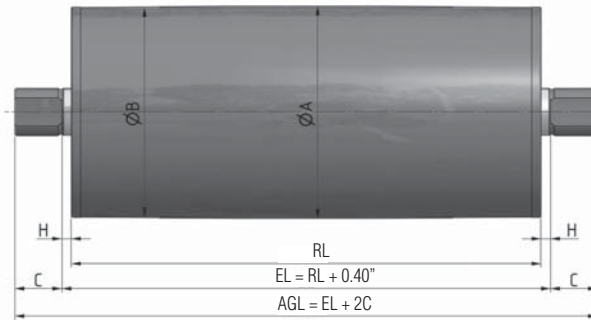


# Motorized Pulley 113LS

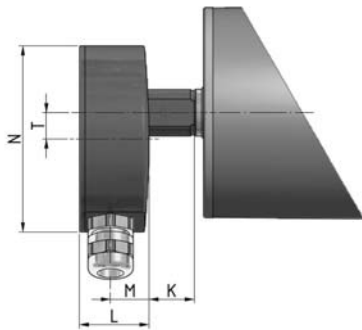
Ø 4.53 in. (113 mm), with helical steel gearbox



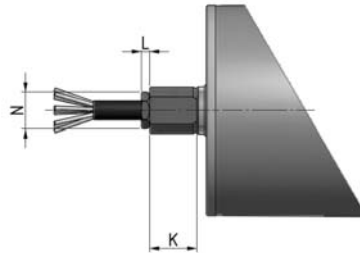
Standard Motorized Pulley with aluminum terminal box



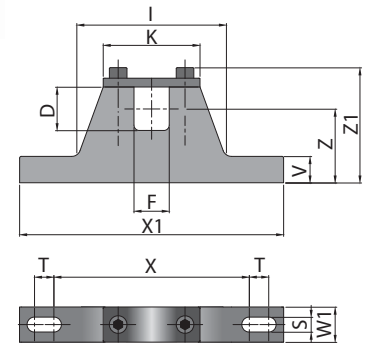
Idler Pulley.



Terminal box in stainless steel.

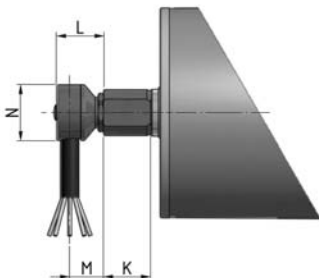


Straight connector in stainless steel.

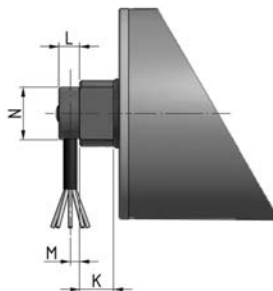


MC = Mounting bracket center-to-center spacing =  $RL + 1.19$ "

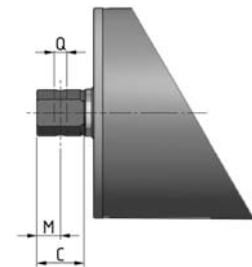
Mounting bracket



Elbow connector in stainless steel.



Elbow connector with shaft cap in stainless steel.



Shaft, cross-drilled and threaded.

# Motorized Pulley 113LS

Ø 4.53 in. (113 mm), with helical steel gearbox



## Dimensions for Motorized Pulley 113LS

Type/Option	A in	B in	C in	D in	E in	F in	G in	H in	K in	L in	M in	N in	Q in	T in
Standard shaft with aluminum terminal box	4.45	4.39	0.98	0.98		0.79		0.20	0.91	1.61	0.67	3.74		0.55
Terminal box in stainless steel									0.91	1.46	0.81	3.9		0.55
Standard shaft with ss straight connector									0.98	0.18		0.77		
Standard shaft with ss elbow connector									0.98	0.98	0.71	1.18		
Cross-drilled and threaded shaft									0.98		0.5		M8	
Shaft cap with ss elbow connector								0.12	0.71	0.13	0.16	1.1		

## Revised Dimensions for options

The following options increase the minimum roller length (RL)

Option	Optional RL min.
Electromagnetic brake	Standard RL min + 1.97in
Encoder - SKF	Standard RL min + 0 in
Encoder - RLS	Standard RL min +1.97in

## Dimensions, materials, and weights for Mounting Brackets

Motorized Pulley	Standard Material	Optional Material	D [in]	F [in]	I [in]	K [in]	S [in]	T [in]	V [in]	W1 [in]	X [in]	X1 [in]	Z [in]	Z1 [in]	Thread	Weight [lbs]
113LS	Aluminum	Stainless steel	0.98	0.79	3.35	2.17	0.33	0.43	0.59	0.79	4.33	5.91	1.65	2.60	M6	1.1/2.0

## Standard weights for Motorized Pulley 113LS

Power HP	Poles	standard weight [lbs] for standard RL [in]												
		9.84	11.81	13.78	15.75	17.72	19.69	21.65	23.62	25.59	27.56	31.50	35.43	39.37
0.05	12	16.0	17.5	19.5	21.0	23.0	24.5	26.0	28.0	29.5	31.0	41.5	45.0	48.0
0.09	12	---	22.0	24.0	26.0	27.5	29.0	31.0	32.5	34.0	36.0	46.0	49.5	53.0
0.11	8	16.0	17.5	19.5	21.0	23.0	24.5	26.0	28.0	29.5	31.0	41.5	45.0	48.0
0.13	6	16.0	17.5	19.5	21.0	23.0	24.5	26.0	28.0	29.5	31.0	41.5	45.0	48.0
0.20	8	---	22.0	24.0	26.0	27.5	29.0	31.0	32.5	34.0	36.0	46.0	49.5	53.0
	4	16.0	17.5	19.5	21.0	23.0	24.5	26.0	28.0	29.5	31.0	41.5	45.0	48.0
0.27	6	16.0	17.5	19.5	21.0	23.0	24.5	26.0	28.0	29.5	31.0	41.5	45.0	48.0
0.32	2	16.0	17.5	19.5	21.0	23.0	24.5	26.0	28.0	29.5	31.0	41.5	45.0	48.0
0.40	4	---	22.0	24.0	26.0	27.5	29.0	31.06	32.5	34.0	36.0	46.0	49.5	53.0
0.50	4	---	22.0	24.0	26.0	27.5	29.0	31.0	32.5	34.0	36.0	46.0	49.5	53.0
	2	---	22.0	24.0	26.0	27.5	29.0	31.0	32.5	34.0	36.0	46.0	49.5	53.0
0.75	4	---	22.0	24.0	26.0	27.5	29.0	31.0	32.5	34.0	36.0	46.0	49.5	53.0
	2	---	22.0	24.0	26.0	27.5	29.0	31.0	32.5	34.0	36.0	46.0	49.5	53.0