



80LP-113LP Connection Diagrams

Power Cord (7 wire) - 1 Phase - US Motor

Internal Thermal Protection Switch not in series with motor

Code:

T1 & T2: Thermal protection

Cr: Run Capacitor

bk - black

bn - brown

wh - white

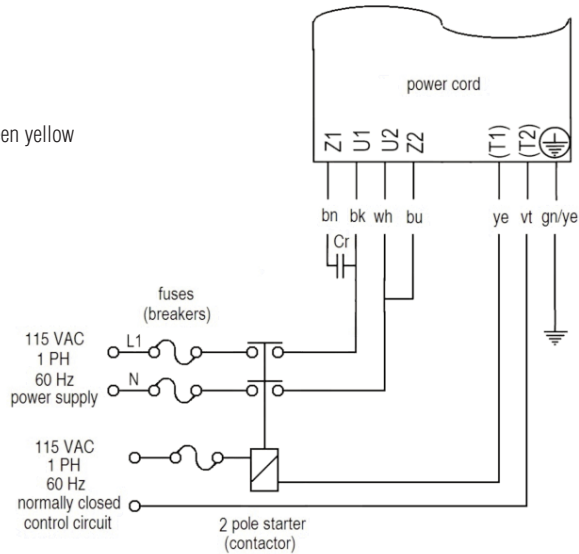
bu - blue

ye - yellow

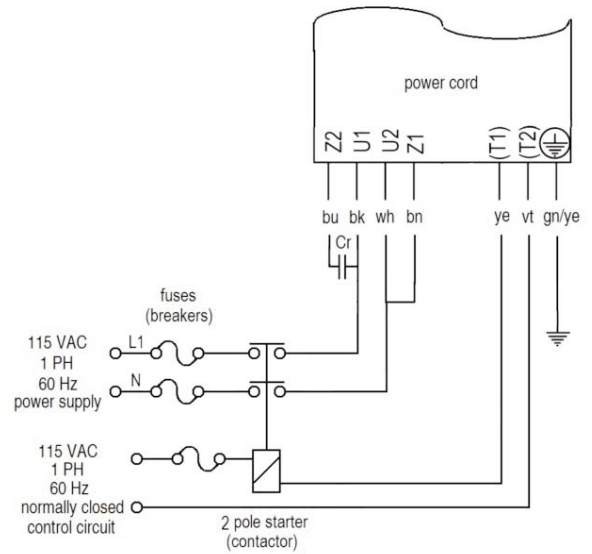
vt - violet

gn/ye - green yellow

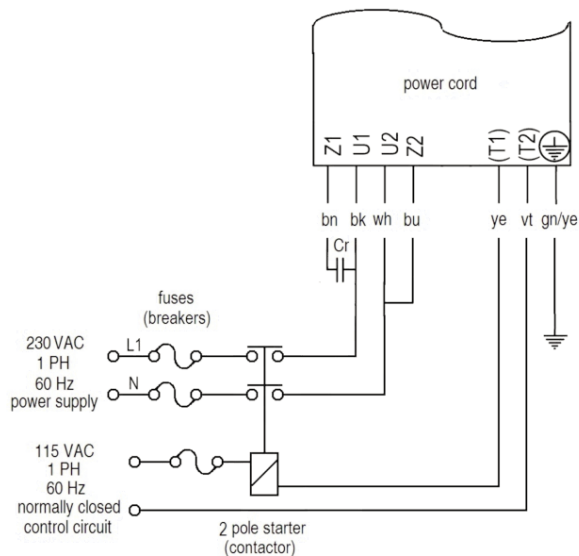
Low Voltage - Clockwise Rotation



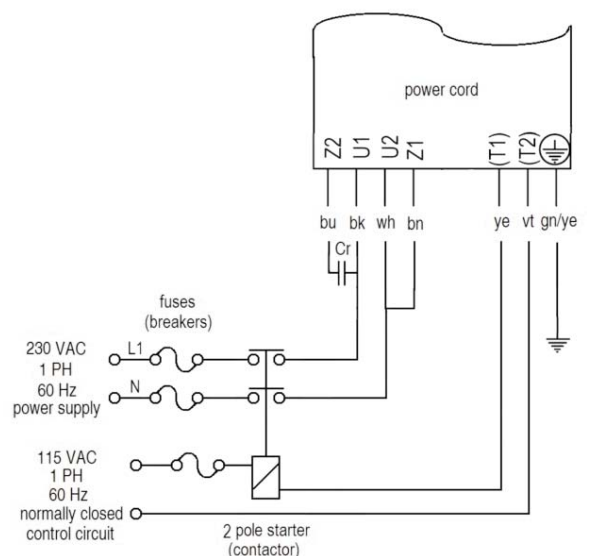
Low Voltage - Counterclockwise Rotation



High Voltage - Clockwise Rotation



High Voltage - Counterclockwise Rotation



NOTE:

The thermal switch in this single phase motor is not installed in series with motor winding. Therefore, the switch must be connected to a normally closed control circuit to deactivate motor.