

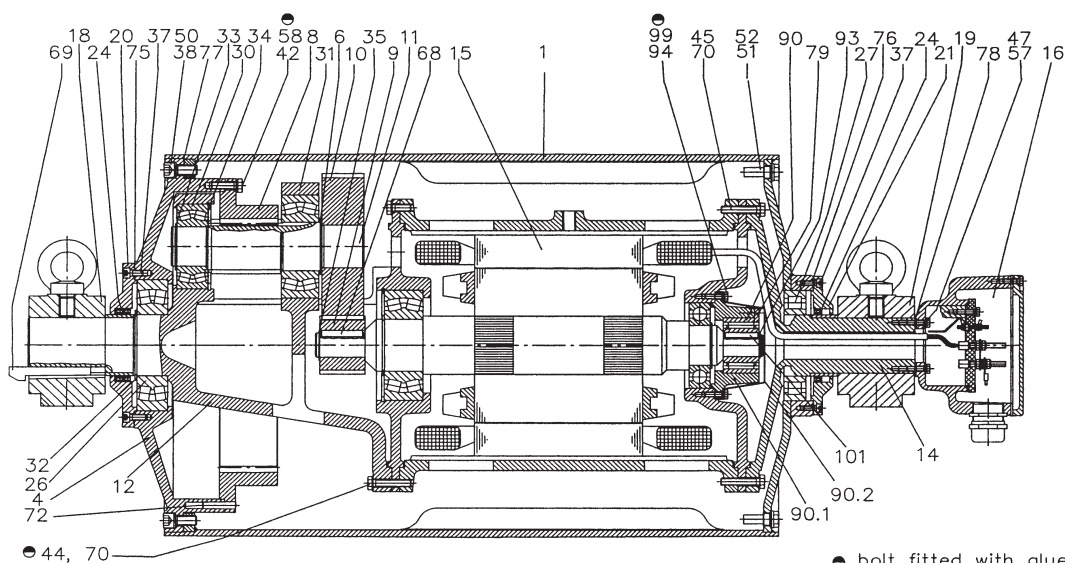


Motorized Pulley 500H – 800H, Ø500mm – 800mm

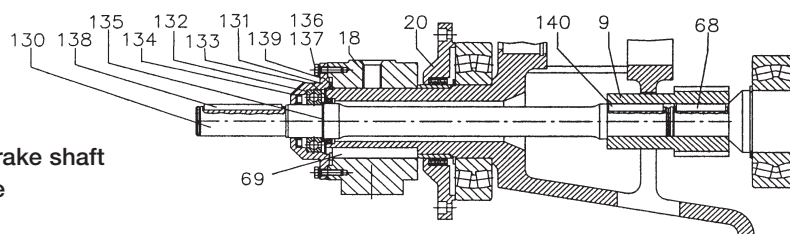
Spare parts list and sectional drawings

Pos.	Description	Pos.	Description	Pos.	Description
1	Shell	24	2 Dust lip seals each side	76	Gasket
4	End housing with geared rim	26	Bearing	77	Gasket
6	Distance washer (633H/800H)	27	Bearing	78	Gasket
8	Geared rim	30	Bearing	79	Holding plate
9	Rotor pinion	31	Bearing	85	Motor flange for backstop/brake
10	Input wheel	32	Retaining ring	90	Backstop
11	Output pinion	33	Retaining ring	90.1	Backstop housing
12	Gear box including rear shaft	34	Retaining ring	90.2	Backstop cover
13	Front shaft	35	Retaining ring	93	Retaining ring
14	Front shaft	37	Hexagon socket screw	94	Hexagon head screw
15	Stator complete	38	Hexagon socket screw	99	Spring washer
15.1	Rotor	42	Hexagon head screw	101	Key
16	Terminal box complete	44	Hexagon head screw	123	Grease nipple
17	Nipple (for 500H/630M only)	45	Hexagon head screw	130	Brake shaft
18	Mounting brackets rear side	47	Hexagon head screw	131	Mounting bracket bearing cover
18.1	Mounting bracket with labyrinth – rear side	50	Washer	132	Roller bearing
19	Mounting bracket front side	51	Gasket	133	Brake shaft seal
19.1	Mounting brackets with labyrinth – front side	52	Magnetic oil plug	134	Brake shaft seal
20	Cover – gear side	58	Spring washer	135	Retaining ring
20.1	Cover with labyrinth groove	68	Key	136	Bolts - bearing cover
21	Cover – front side	69	Gib key	137	Spring lock washer
22.1	Cover with labyrinth groove	70	Waved spring washer	138	Key
23	Rear flange	72	Grooved pin	139	Retaining ring
		73	Set screw	140	Key
		75	Gasket		

Backstop Execution



Execution with brake shaft for external brake

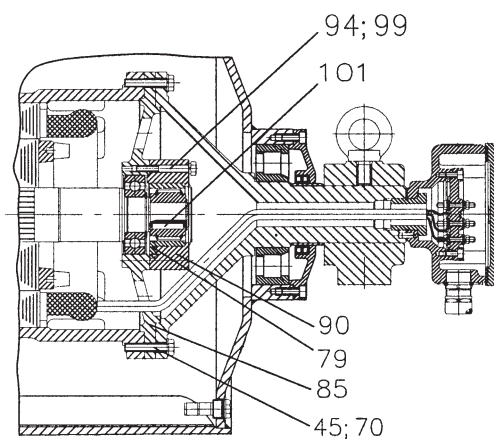




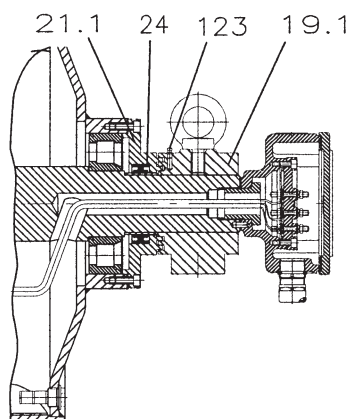
Motorized Pulley 500H – 800H, Ø 500 mm – 800 mm

Sectional drawings

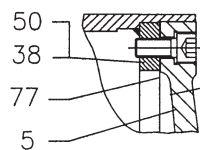
Backstop Option



Labyrinth Option



Valid for 800M & 800H



800M & 800H bolted cast iron
end housings at both sides

