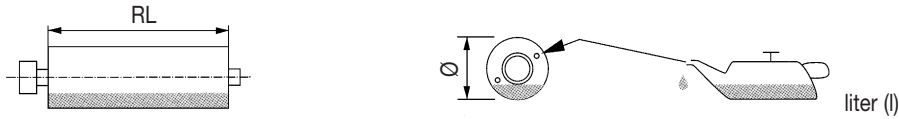




Oil contents in liter for STANDARD Motorized Pulleys in HORIZONTAL applications

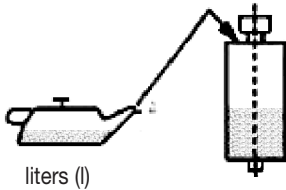


RL	138E	165E	220M & 220H		320L	320M & 320H			400L	400M	400H	500L	500H	630M	630H	800M	800H
			0.37-0.55kW 1.1-1.5kW	0.75kW 2.2-5.5kW		0.75k - 4.0kW	0.75 - 3.0kW	4.0 - 5.5kW									
300	0.7																
350	0.9	1.2															
400	1.1	1.4	3.00		6.5												
450	1.3	1.6	3.50	4.00	7.0												
500	1.5	1.8	4.00	5.00	7.5	3.50	8.0	10.0									
550	1.8	2.0	4.25	5.25	8.0	3.75	8.5	10.5	6.0								
600	2.0	2.3	4.50	5.50	9.0	4.00	9.0	11.0	6.5	8.0	16.0		10.0				
650	2.2	2.5	4.75	5.75	9.5	4.25	9.5	12.0	7.0	8.5	17.0	21.0	10.5				
700	2.4	2.7	5.00	6.00	10.0	4.50	10.0	13.0	7.5	9.0	18.0	22.0	11.0				
750	2.6	2.9	5.25	6.25	10.5	5.00	10.5	13.5	8.0	9.5	19.0	23.0	11.5	27.5			
800	2.8	3.1	5.50	6.50	11.0	5.50	11.0	14.0	8.5	10.0	20.0	24.0	12.0	28.0			
850	3.0	3.3	5.75	6.75	11.5	5.75	11.5	15.0	9.0	10.5	21.0	25.0	12.5	29.0			
900	3.2	3.5	6.00	7.00	12.5	6.00	12.0	16.0	9.5	11.0	22.0	26.0	13.0	30.0			
950	3.4	3.7	6.25	7.25	13.0	6.25	13.0	17.0	10.0	11.5	23.0	28.0	14.0	32.0	51.5	61.5	
1000	3.6	3.9	6.50	7.50	14.0	6.50	14.0	18.0	10.5	12.5	25.0	30.0	15.0	34.0	53.0	64.0	
1050	3.6	4.1	6.75	7.75	14.5	6.75	14.5	18.5	11.0	13.5	27.0	31.0	15.5	36.0	54.0	66.5	
1100	3.8	4.4	7.00	8.00	15.0	7.00	15.0	19.0	11.5	14.0	28.0	32.0	16.0	38.0	56.5	69.0	
1150	4.0	4.6	7.25	8.25	16.5	7.50	16.5	20.5	13.0	14.5	29.0	34.0	17.0	40.0	59.0	71.0	
1200	4.2	4.8	7.50	8.50	18.0	8.00	18.0	23.0	14.0	15.0	30.0	36.0	18.0	42.0	60.5	73.0	
1250	4.4	5.0	7.75	8.75	19.0	8.50	19.0	24.0	14.5	15.5	31.0	37.0	18.5	43.5	63.0	74.5	
1300	4.6	5.2	8.00	9.00	20.0	9.00	20.0	25.0	15.0	16.0	32.0	38.0	19.0	45.0	64.5	76.0	
1350	4.8	5.4	8.25	9.25	21.0	9.50	21.0	26.5	15.5	17.0	34.0	40.0	20.0	46.5	66.0	78.0	
1400	5.0	5.6	8.50	9.50	22.0	10.00	22.0	28.0	16.0	18.0	36.0	42.0	21.0	48.0	68.0	80.0	135.0
1450	5.1	5.8	8.75	9.75	23.0	10.50	23.0	29.0	16.5	18.5	37.0	43.0	21.5	49.0	70.0	82.0	137.5
1500	5.3	6.0	9.00	10.00	24.0	11.00	24.0	30.0	17.0	19.0	38.0	44.0	22.0	50.0	72.0	84.0	140.0
1550	4.8	5.8	9.25	10.25	25.0	12.00	25.0	31.5	17.5	19.5	39.0	46.0	23.0	51.5	74.0	86.0	142.5
1600	5.0	6.0	9.50	10.50	26.0	13.00	26.0	33.0	18.0	20.0	40.0	48.0	24.0	53.0	76.0	88.0	145.0
1650	5.1	6.2	10.00	11.00	27.0	14.00	27.0	34.0	18.5	20.5	41.0	50.0	25.0	54.0	79.0	90.0	147.5
1700	5.3	6.4	11.50	11.50	28.0	15.00	28.0	35.0	19.0	21.0	42.0	52.0	26.0	55.0	80.5	92.0	150.0
1750	5.5	6.6	12.00	12.00	29.0	16.00	29.0	36.0	19.5	22.0	44.0	54.0	27.0	56.5	82.0	94.0	152.5
1800	5.6	6.8	13.00	13.00	30.0	17.00	30.0	37.0	20.0	23.0	46.0	56.0	28.0	58.0	84.0	96.0	155.0
1850			13.50	13.50	30.5	18.00	30.5	38.5	20.5	23.5	47.0	60.0	30.0	59.5	86.0	98.0	157.5
1900			14.00	14.00	31.0	19.00	31.0	40.0	21.0	24.0	48.0	64.0	32.0	61.0	88.0	100.0	160.0

Please Note! The given oil contents are valid for STANDARD un-lagged Motorized Pulleys only!
 For SPECIAL options the oil contents might deviate severely. Therefore, ALWAYS use the given oil quantity listed on the MOTOR DATA PLATE!



Oil contents in liter (l) for SPECIAL constructions in VERTICAL applications



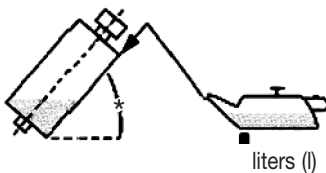
Type	Amount of oil in liter (l)	Specifications
138E	1.4	Electrical connection to be located at the top
165E	3.0	
220M	10.0	
220H	10.0	
320L	25.0	
320M	25.0	
320H	25.0	
400L	40.0	

Please Note!

- The given oil contents are valid for STANDARD un-lagged Motorized Pulleys only!
- For SPECIAL options the oil contents might deviate severely.
- Therefore, ALWAYS use the given oil quantity listed on the DATA PLATE!

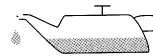
Special Version Please contact Rulmecca

Please note the indicated oil fill quantities are valid only for STANDARD execution Motorized Pulleys. With SPECIAL executions it is possible that the oil quantities vary. In such a case the given quantities on the motor data label is the valid indication



Product range Motorized Pulleys	Non-horizontal installation between	Typical application	Precautions
138E & 165E 220M & 220H 320L, 320M & 320H 400L	5° - ≤90°	Magnetic Separations	Special design & special amount of oil! Please contact Rulmecca before placing the order.

Oil Types



Type of Motorized Pulley	IEC34 Ins.Class	Ambient Temp.	ISO 3498 - DIN 51519	DIN 51517	Castrol	BP	ESSO	Mobiloil	Shell	Texaco	
Ø138-800 Standard	F	-25°C+40°C	CC ISOVG 150	CLP ISOVG 150	ALPHA SP 150	ENERGOL GR-XP 150	SPARTAN EP 150	MOBILGEAR 629	OMALA 150	MEROPA 150	
Ø138-800 Synthetic option	F	-25°C+40°C	CC ISOVG 220	CLP ISOVG 220	ALPHA-SYNTH 220		SPARTAN Syn. EP 220	SHC 630			
Ø138-800 Standard	H	-25°C+40°C	CC ISOVG 220	CLP ISOVG 220	ALPHA-SYNTH 220		SPARTAN Syn. EP 220	SHC 630			
Ø138-800 Food Grade	F & H	-30°C+40°C	CC ISO VG 220	Complies with Food Additive regulation 12 CPR					Shell Cassida GL220		

Synthetic oil is not only used for Insulation Class H, but also

- To reduce wear of gears and bearings and consequently increase the service life of the Pulley
- To reduce noise
- To reduce oil damages due to overheating in connection with certain options, types of rubber lagging etc. etc.