



# 113LS - 165LS Connection Diagrams

Terminal Box - 3 Phase - Single Voltage  
US Motor - with & without Brake

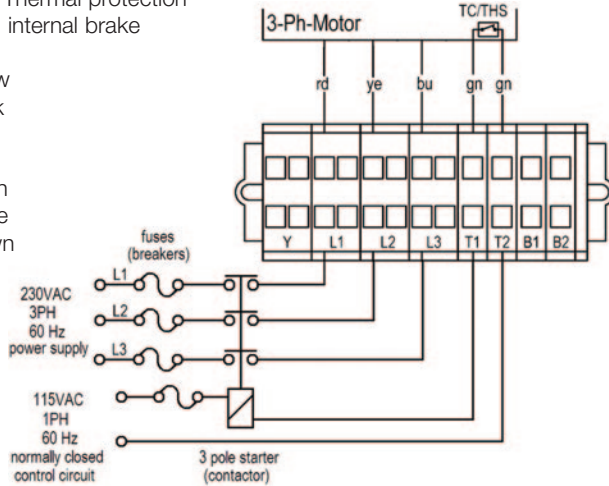
Code:

T1 & T2: Thermal protection

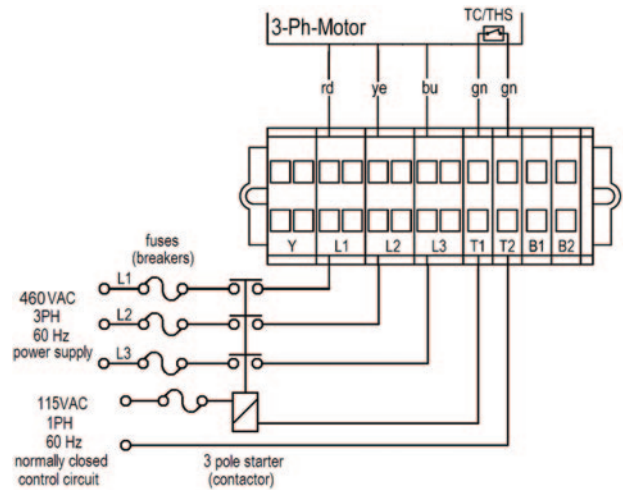
B1 & B2: internal brake

- rd - red
- ye - yellow
- bk - black
- gy - gray
- bu - blue
- gn - green
- wh - white
- bn - brown

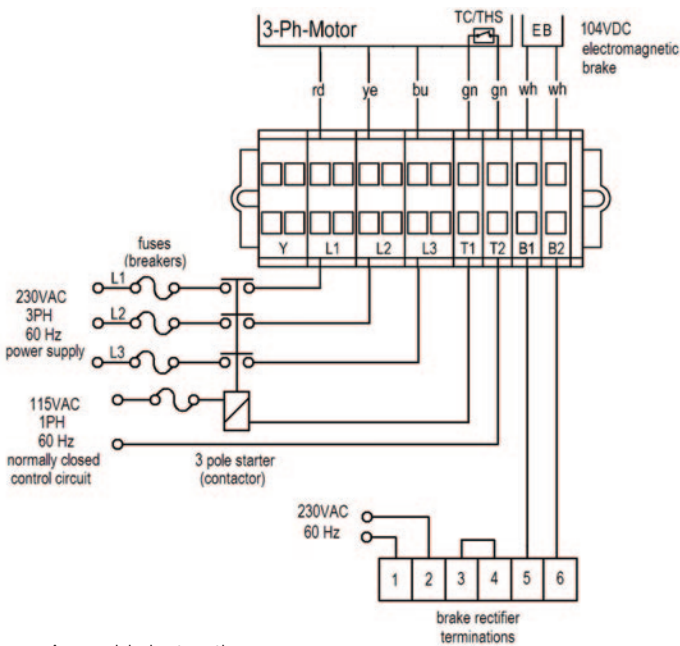
**Low Voltage**



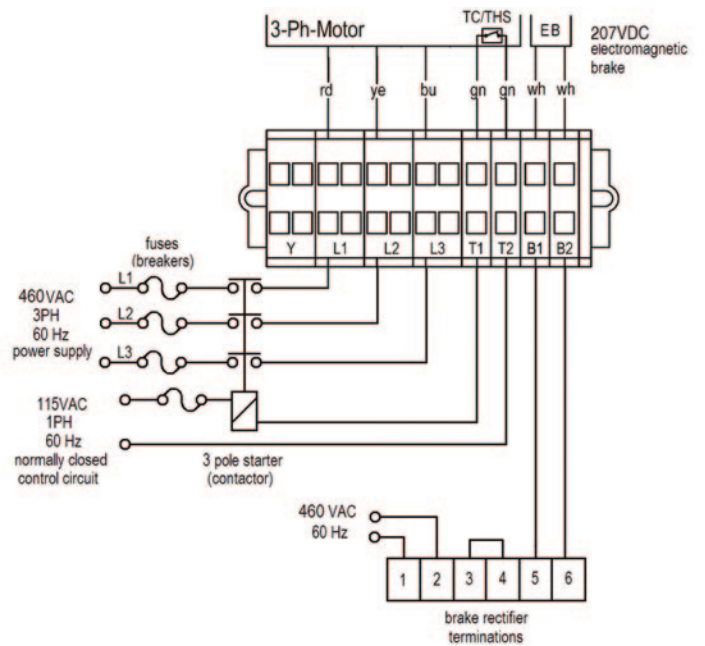
**High Voltage**



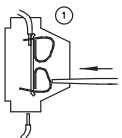
**Low Voltage with Brake Option**



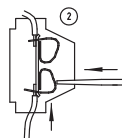
**High Voltage with Brake Option**



Assembly instructions



Push down clamp



Push in wire

NOTE:

Brake rectifier is shown with jumper across terminals 3 & 4. This enables AC power supply to rectifier to stop and start brake. Brake responsiveness may be improved by connecting an external switch to terminals 3 & 4.