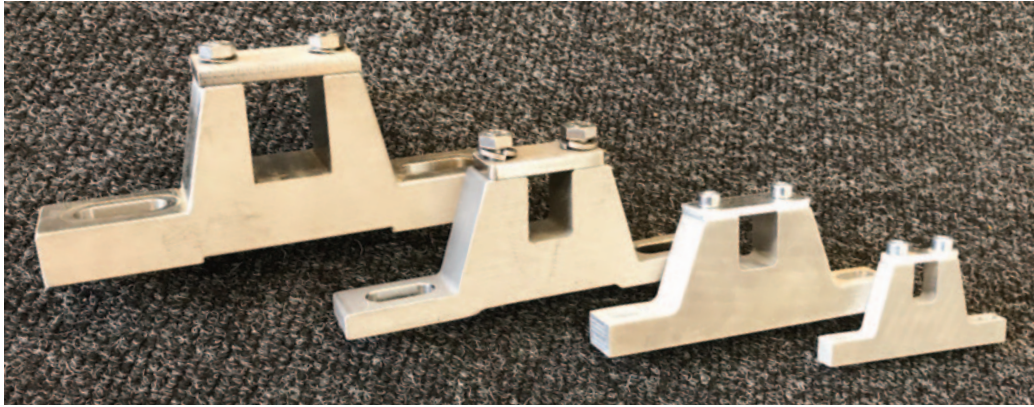


Mounting Brackets for Motorized Pulley and Idler



Mounting brackets: From left to right, 6YA0U (stainless steel for model 165LS), S2YAKA (stainless steel for model 138LS), S1MB03 (aluminum for model 113LS), and S0MB03 (aluminum for model 80LS)

Dimensions, materials, and weights for Mounting Brackets

| Motorized Pulley | Standard Matl./ Part Number | Optional Matl./ Part Number | D in | F in | I in | K in | S in | T in | V in | W1 in | X in | X1 in | Z in | Z1 in | Thread | Wt lbs |
|------------------|------------------------------|-----------------------------|------|------|------|------|------|------|------|-------|------|-------|------|-------|--------|---------|
| 80LS | Aluminum S0MB03 | Stainless steel S0MB-US00SS | 0.79 | 0.55 | 2.24 | 1.50 | 0.26 | 0.35 | 0.47 | 0.39 | 2.83 | 4.06 | 1.38 | 2.17 | M6 | 0.3/0.5 |
| 113LS | Aluminum S1MB03 | Stainless steel S1MB-US00SS | 0.98 | 0.79 | 3.35 | 2.17 | 0.33 | 0.43 | 0.59 | 0.79 | 4.33 | 5.91 | 1.65 | 2.60 | M6 | 1.1/2.0 |
| 138LS | Cast iron black paint S2YAKL | Stainless steel S2YAKA | 1.18 | 0.79 | 3.39 | 2.24 | 0.43 | 0.67 | 0.47 | 0.94 | 4.33 | 7.09 | 1.75 | 2.83 | M8 | 3.1 |
| 165LS | Cast iron black paint 6YA0K | Stainless steel 6YA0U | 1.57 | 1.18 | 3.31 | 2.44 | 0.55 | 0.79 | 0.87 | 1.57 | 4.33 | 7.48 | 1.97 | 3.27 | M8 | 4.4 |

