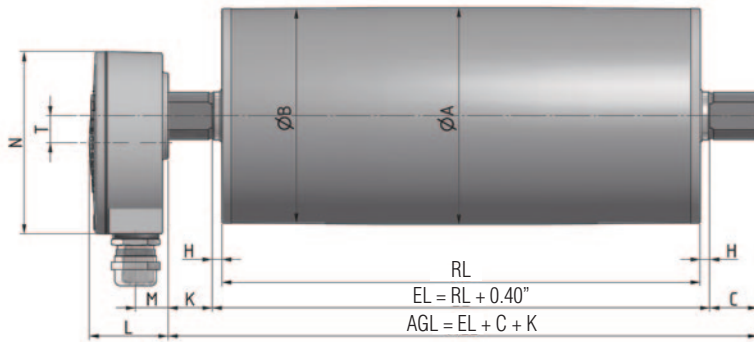


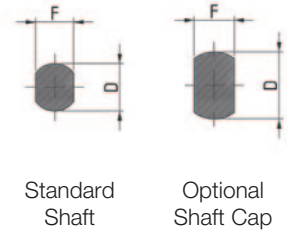


Motorized Pulley 113LS

Ø 4.53 in. (113 mm), helical steel gearbox

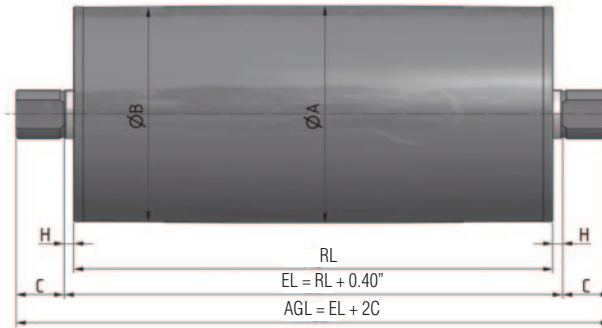


Standard Motorized Pulley with aluminum terminal box

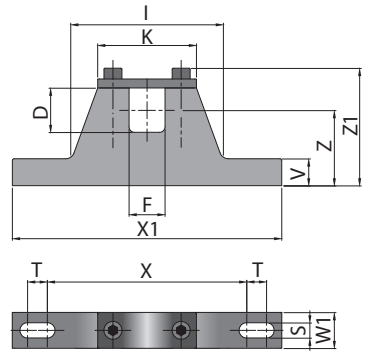


Standard Shaft

Optional Shaft Cap

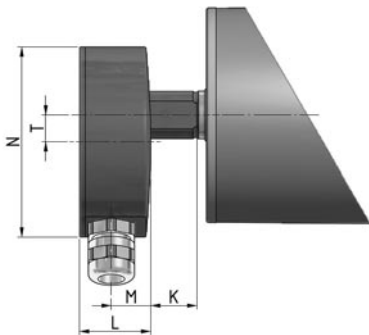


Idler Pulley.

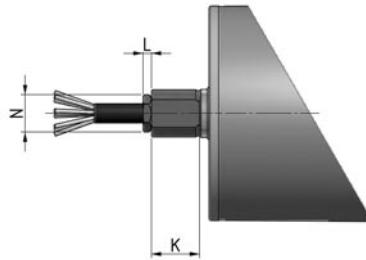


MC = Mounting bracket center-to-center spacing = $RL + 1.19$ "

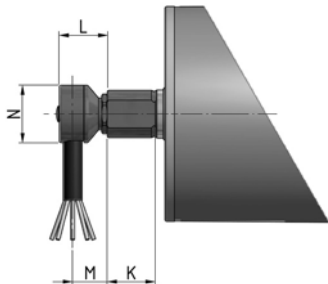
Mounting bracket



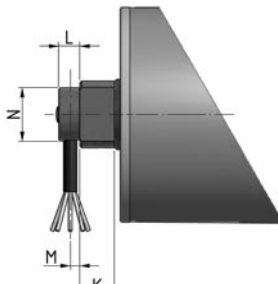
Terminal box in stainless steel.



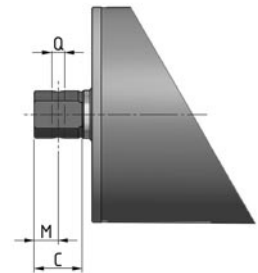
Straight connector in stainless steel.



Elbow connector in stainless steel.



Elbow connector with shaft cap in stainless steel.



Shaft, cross-drilled and threaded.

Motorized Pulley 113LS

Ø 4.53 in. (113 mm), helical steel gearbox



Dimensions for Motorized Pulley 113LS														
Type/Option	A in	B in	C in	D in	E in	F in	G in	H in	K in	L in	M in	N in	Q in	T in
Standard shaft with aluminum terminal box	4.45	4.39	0.98	0.98		0.79		0.20	0.91	1.61	0.67	3.74		0.55
Terminal box in stainless steel									0.91	1.46	0.81	3.9		0.55
Standard shaft with ss straight connector									0.98	0.18		0.77		
Standard shaft with ss elbow connector									0.98	0.98	0.71	1.18		
Cross-drilled and threaded shaft								0.12	0.71	0.13	0.16	1.1		

Revised Dimensions for options

The following options increase the minimum roller length (RL)

Option	Optional RL min.
Electromagnetic brake	Standard RL min + 1.97in
Encoder - SKF	Standard RL min + 0 in
Encoder - RLS	Standard RL min +1.97in

Dimensions, materials, and weights for Mounting Brackets

Motorized Pulley	Standard Material	Optional Material	D in	F in	I in	K in	S in	T in	V in	W1 in	X in	X1 in	Z in	Z1 in	Thread	Wt lbs
113LS	Aluminum	Stainless steel	0.98	0.79	3.35	2.17	0.33	0.43	0.59	0.79	4.33	5.91	1.65	2.60	M6	1.1/2.0

Standard weights for Motorized Pulley 113LS

Power HP	Poles	standard weight [lbs] for standard RL [in]												
		9.84	11.81	13.78	15.75	17.72	19.69	21.65	23.62	25.59	27.56	31.50	35.43	39.37
0.05	12	16.0	17.5	19.5	21.0	23.0	24.5	26.0	28.0	29.5	31.0	41.5	45.0	48.0
0.09	12	---	22.0	24.0	26.0	27.5	29.0	31.0	32.5	34.0	36.0	46.0	49.5	53.0
0.11	8	16.0	17.5	19.5	21.0	23.0	24.5	26.0	28.0	29.5	31.0	41.5	45.0	48.0
0.13	6	16.0	17.5	19.5	21.0	23.0	24.5	26.0	28.0	29.5	31.0	41.5	45.0	48.0
0.20	8	---	22.0	24.0	26.0	27.5	29.0	31.0	32.5	34.0	36.0	46.0	49.5	53.0
	4	16.0	17.5	19.5	21.0	23.0	24.5	26.0	28.0	29.5	31.0	41.5	45.0	48.0
0.27	6	16.0	17.5	19.5	21.0	23.0	24.5	26.0	28.0	29.5	31.0	41.5	45.0	48.0
0.32	2	16.0	17.5	19.5	21.0	23.0	24.5	26.0	28.0	29.5	31.0	41.5	45.0	48.0
0.40	4	---	22.0	24.0	26.0	27.5	29.0	31.06	32.5	34.0	36.0	46.0	49.5	53.0
0.50	4	---	22.0	24.0	26.0	27.5	29.0	31.0	32.5	34.0	36.0	46.0	49.5	53.0
	2	---	22.0	24.0	26.0	27.5	29.0	31.0	32.5	34.0	36.0	46.0	49.5	53.0
0.75	4	---	22.0	24.0	26.0	27.5	29.0	31.0	32.5	34.0	36.0	46.0	49.5	53.0
	2	---	22.0	24.0	26.0	27.5	29.0	31.0	32.5	34.0	36.0	46.0	49.5	53.0